

Westpoint @ 751

751 Renaissance Pkwy | Durham, NC 27713



FINLEY DESIGN
ARCHITECTURE + INTERIORS

Westpoint at 751
Birds Eye Perspective View
September 29, 2010

- ◆ Located at intersection of I-40 and NC HWY 751

- ◆ Last restaurant pad near Southpoint Mall

- ◆ Traffic Counts on I-40 are 108,000 VPD

- ◆ Convenient to I-540, RDU, RTP, Duke, and UNCCH

Call Broker for pricing and detailed information.

Radius	1-Mile	3-Mile	5-Mile	7-Mile
Population	3,141	44,085	105,888	193,099
Avg. Household Income	\$82,668	\$88,434	\$85,012	\$81,794
Number Households	1,856	20,479	47,383	84,145
Daytime Population	3,387	16,278	65,175	136,411

Q1, 2010 Popstats



James Broemer

(919) 379-9288

jbroemer@welcordevelopment.com

Westpoint @ 751

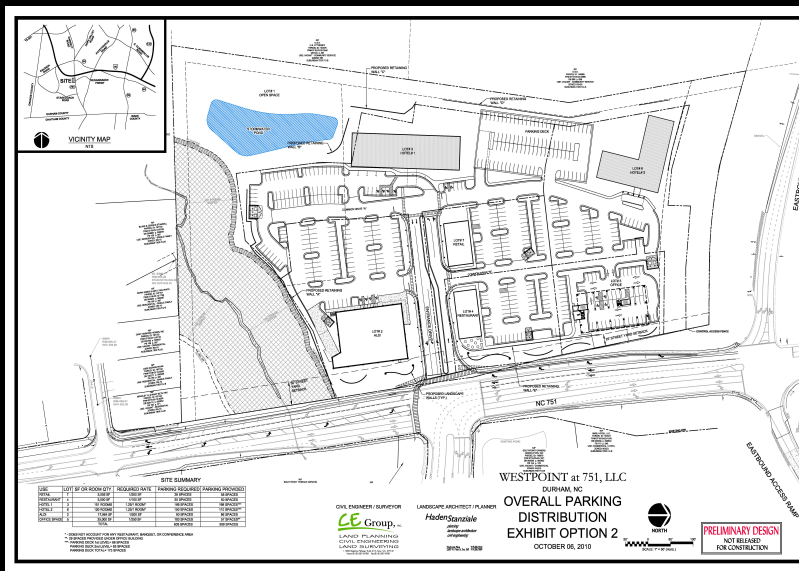
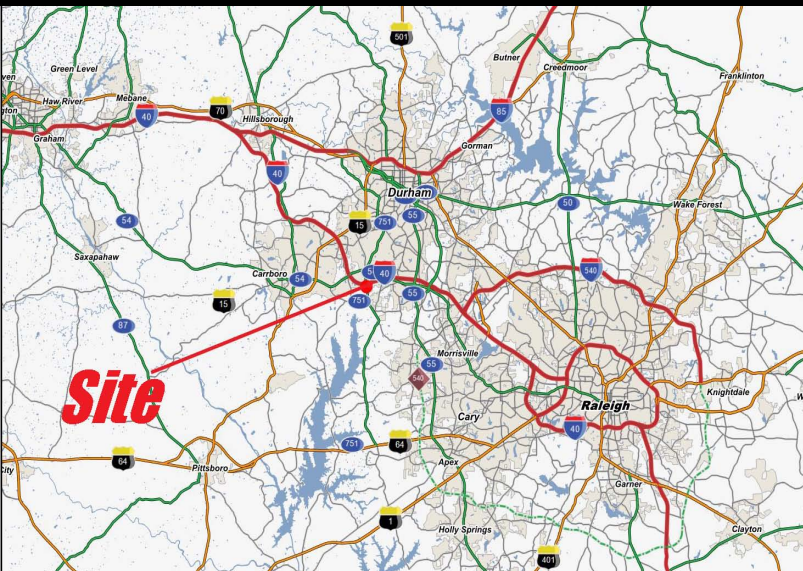
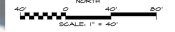
751 Renaissance Pkwy | Durham, NC 27713



WESTPOINT at 751
DURHAM, NC
ILLUSTRATIVE MASTER PLAN
SEPTEMBER 14, 2010



CE Group, Inc.
LAND PLANNING
CIVIL ENGINEERING
LAND SURVEYING



WESTPOINT at 751, LLC
DURHAM, NC
OVERALL PARKING DISTRIBUTION EXHIBIT OPTION 2
OCTOBER 05, 2010

PRELIMINARY DESIGN
NOT BEARING FOR CONSTRUCTION



James Broemer

(919) 379-9288

jbroemer@welcordevelopment.com